



***International Challenges for the  
Recruitment of PG research students***

***Dr Neil Kemp  
International HE Consultant and  
Visiting Fellow, Institute of Education, London***



## ***some numbers .....***

- ***>52,000 international pgr students in UK***
  - ***EU comprises approximately 30% of these***
- ***international comprise 45% of all PGR students in UK***
- ***International PGR students worth > £600 million pa to UK economy direct, much more indirect***

## ***A few clear messages -***

- ***UK will continue to need international PGR students as:***
  - *low UK student demand, particularly in some key subjects*
  - *major contribution to UK research output*
  - *Need to support STEM subjects*
- ***UK has been very successful over last few years***

### ***BUT***

- ***UK's underlying recruitment trend is down!***
- ***Current UK recruitment and funding 'model' is not sustainable***
- ***Competition growing rapidly – US, across Europe, Australia, others***

***Research commissioned by UK HE International in 2008***



**Authors:**

***Will Archer***

***Colin Gilligan***

***Christine Humfrey***

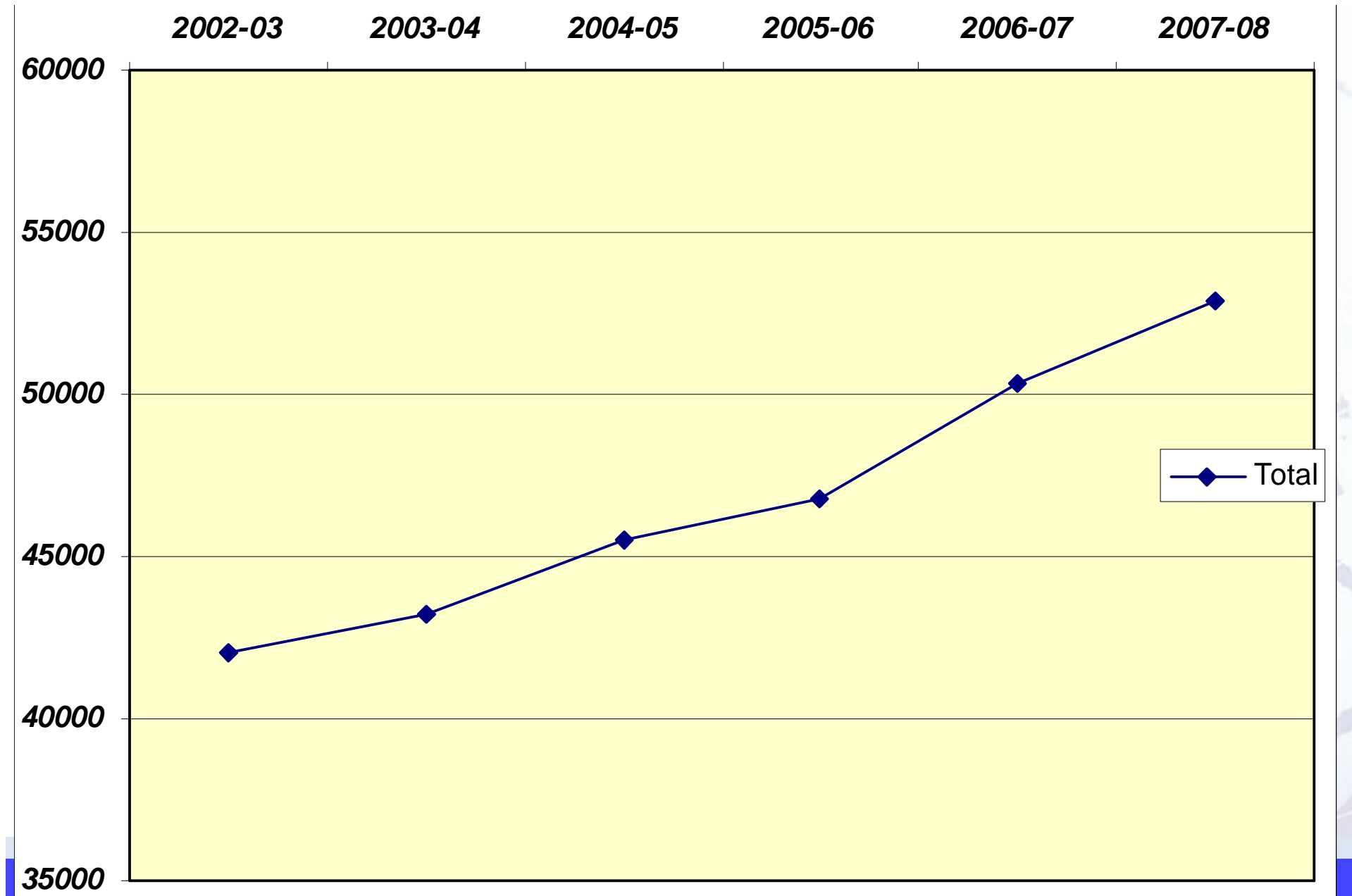
***Neil Kemp***



## **International PGR students in UK HE according to main source countries (2007-08)**

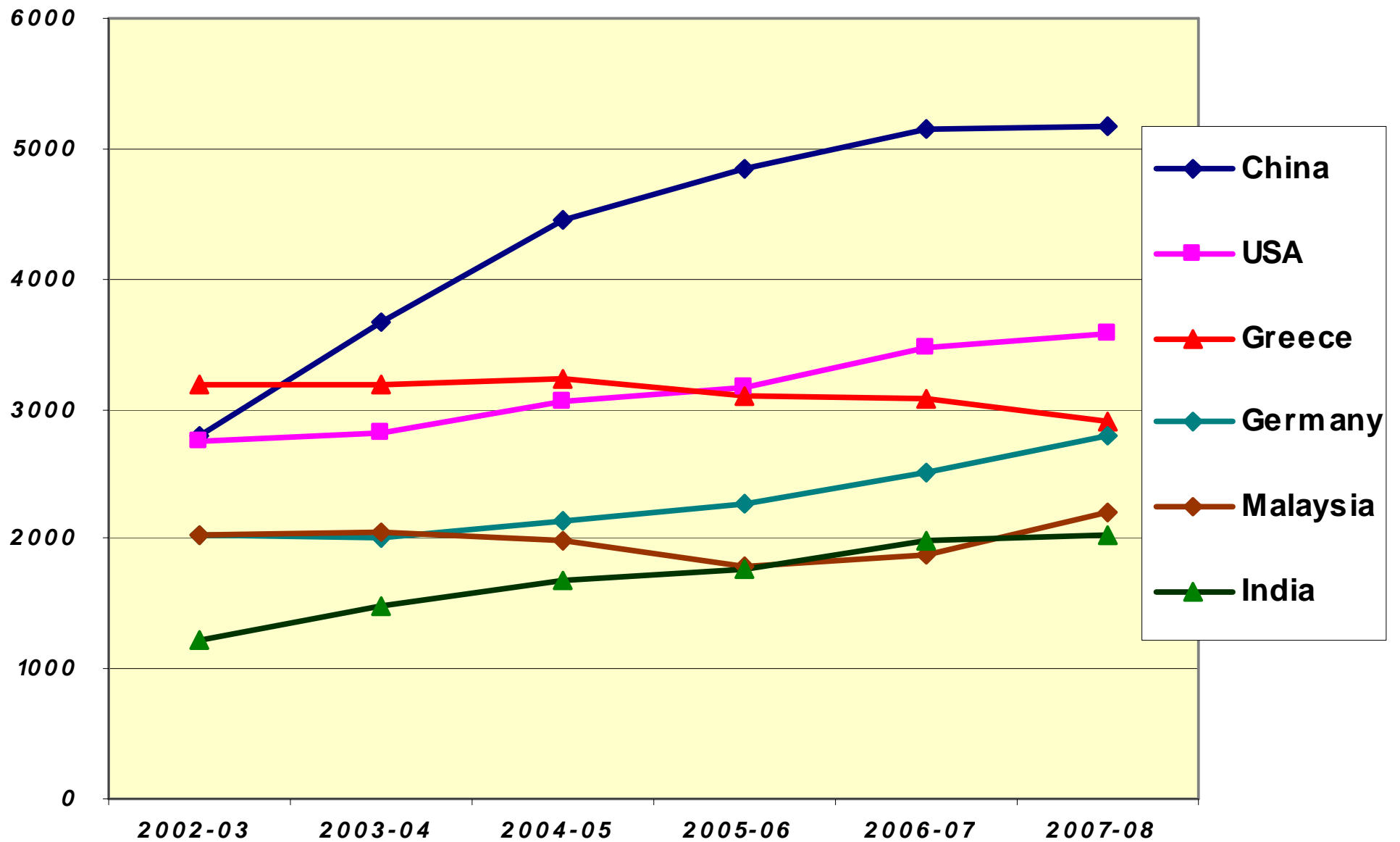
<b>Country</b>	<b>Nos</b>	<b>% share</b>
<b>Total</b>	<b>52900</b>	<b>100.0</b>
<b>China</b>	<b>5175</b>	<b>9.8</b>
<b>USA</b>	<b>3568</b>	<b>6.7</b>
<b>Greece</b>	<b>2894</b>	<b>5.5</b>
<b>Germany</b>	<b>2790</b>	<b>5.3</b>
<b>Malaysia</b>	<b>2211</b>	<b>4.2</b>
<b>Italy</b>	<b>2037</b>	<b>3.9</b>
<b>India</b>	<b>2030</b>	<b>3.8</b>
<b>France</b>	<b>1388</b>	<b>2.6</b>
<b>Canada</b>	<b>1324</b>	<b>2.5</b>
<b>Taiwan</b>	<b>1246</b>	<b>2.4</b>
<b>Ireland</b>	<b>1243</b>	<b>2.3</b>
<b>Thailand</b>	<b>1211</b>	<b>2.3</b>
<b>Pakistan</b>	<b>1202</b>	<b>2.3</b>
<b>Saudi Arabia</b>	<b>1090</b>	<b>2.1</b>

# *Trend in total numbers of international PGR students in UK HE*



**UK – looking good!**

**Total numbers of international PGR students in UK HEIs, leading source countries**



## *PGR students in UK HE according to main subject areas (2007-08)*

	<i>Total students</i>	<i>All intl</i>	<i>Intl as %</i>
<i>Totals all</i>	<b>121357</b>	<b>52901</b>	<b>43.6</b>
<b>Medicine and related</b>	<b>17987</b>	<b>5364</b>	<b>29.8</b>
<b>Eng and tech</b>	<b>17566</b>	<b>10361</b>	<b>59.0</b>
<b>Humanities</b>	<b>17380</b>	<b>7153</b>	<b>41.2</b>
<b>Biosciences and related</b>	<b>15284</b>	<b>5060</b>	<b>33.1</b>
<b>Physical sciences</b>	<b>13591</b>	<b>5047</b>	<b>37.1</b>
<b>Social studies</b>	<b>11463</b>	<b>6143</b>	<b>53.6</b>
<b>Maths and computing</b>	<b>8587</b>	<b>4653</b>	<b>54.2</b>
<b>Education</b>	<b>6779</b>	<b>2570</b>	<b>37.9</b>
<b>Business &amp; admin studies</b>	<b>6313</b>	<b>3731</b>	<b>59.1</b>
<b>Creative arts &amp; design</b>	<b>3899</b>	<b>1325</b>	<b>34.0</b>
<b>Law</b>	<b>2416</b>	<b>1449</b>	<b>60.0</b>

## ***Lead countries according to subject area***

### ***§ Engineering and technology:***

***China, Malaysia, Greece, India, Italy***

### ***§ Physical sciences***

***China, France, Germany, Italy, Spain***

### ***§ Biosciences:***

***Greece, China, Germany, India, USA***

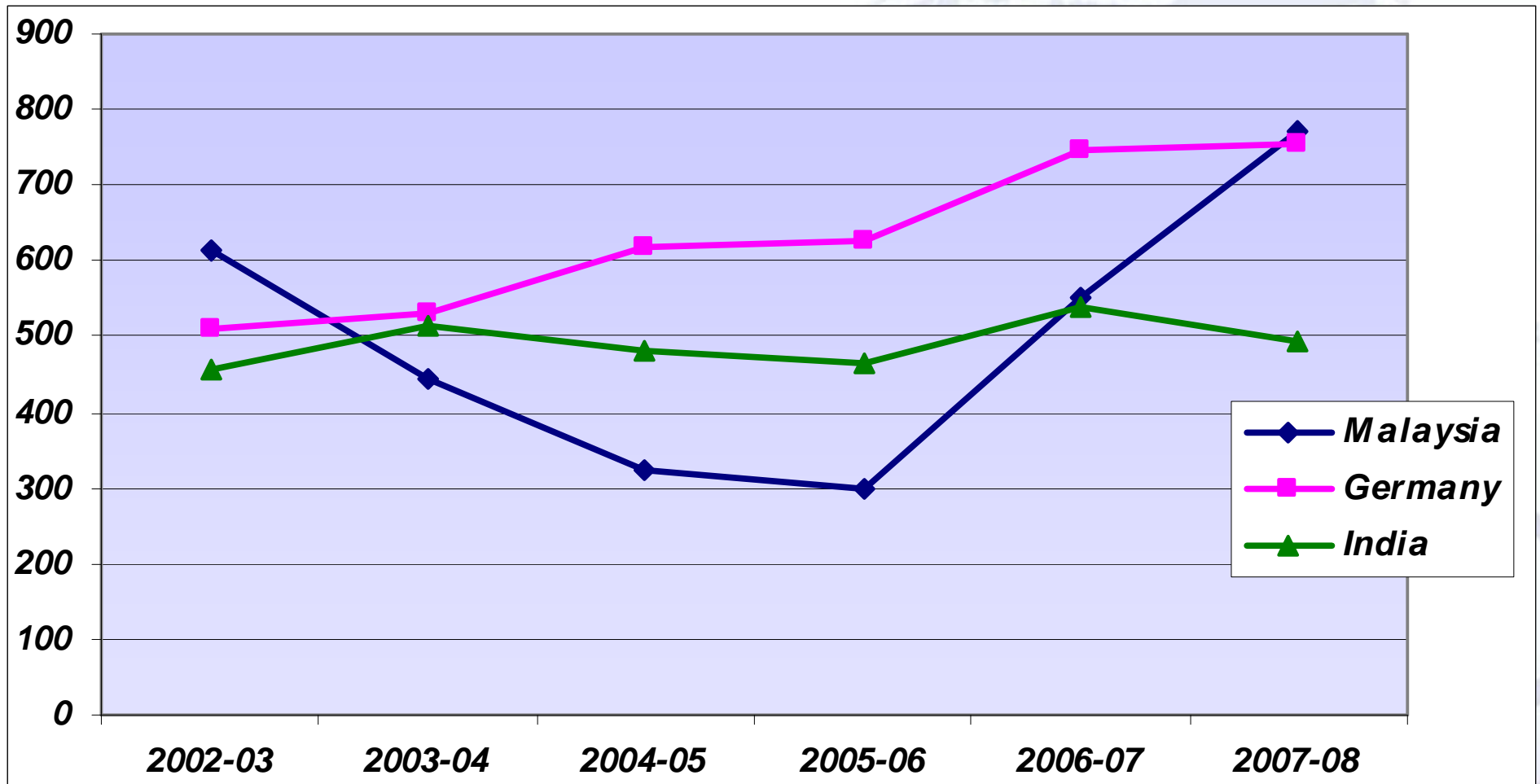
### ***§ Social sciences***

***USA, Germany, China, Italy, Greece***

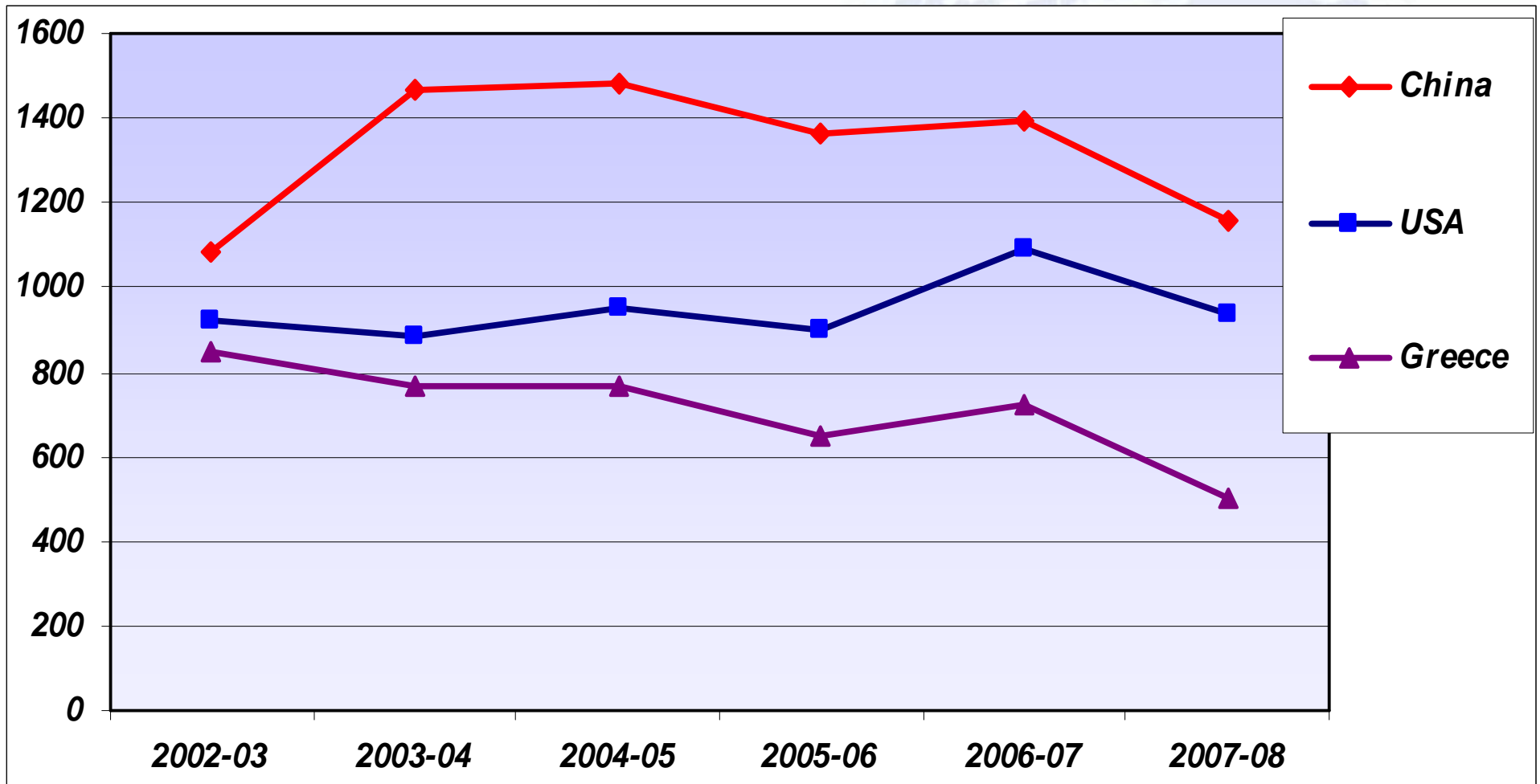
### ***§ Humanities***

***USA, Canada, Germany, Greece, Korea***

## Trends in new enrolments of international PGR students according to main source countries



## Trends in new enrolments of international PGR students according to main source countries



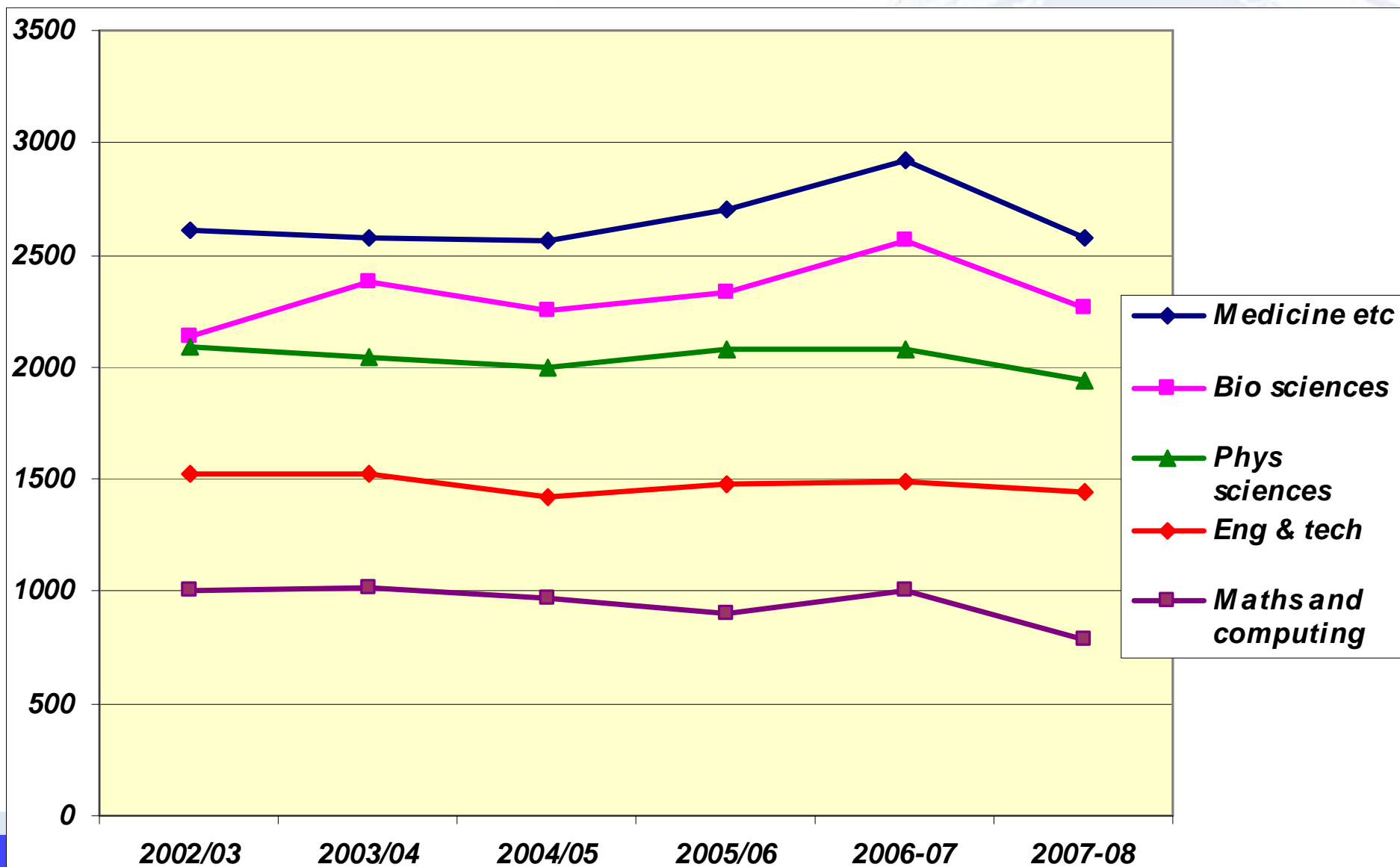
***Of the 25 leading source countries for UK PGR student recruitment new enrolments in 2007-08 declined from 20 of these countries!***

***Countries of major concern include:***

- ***China***
- ***Greece***
- ***India***
- ***Taiwan***
- ***Japan***
- ***Korea***
- ***Thailand***
- ***Egypt***



## Trends in *new enrolments of UK PGR students according to main subject areas*

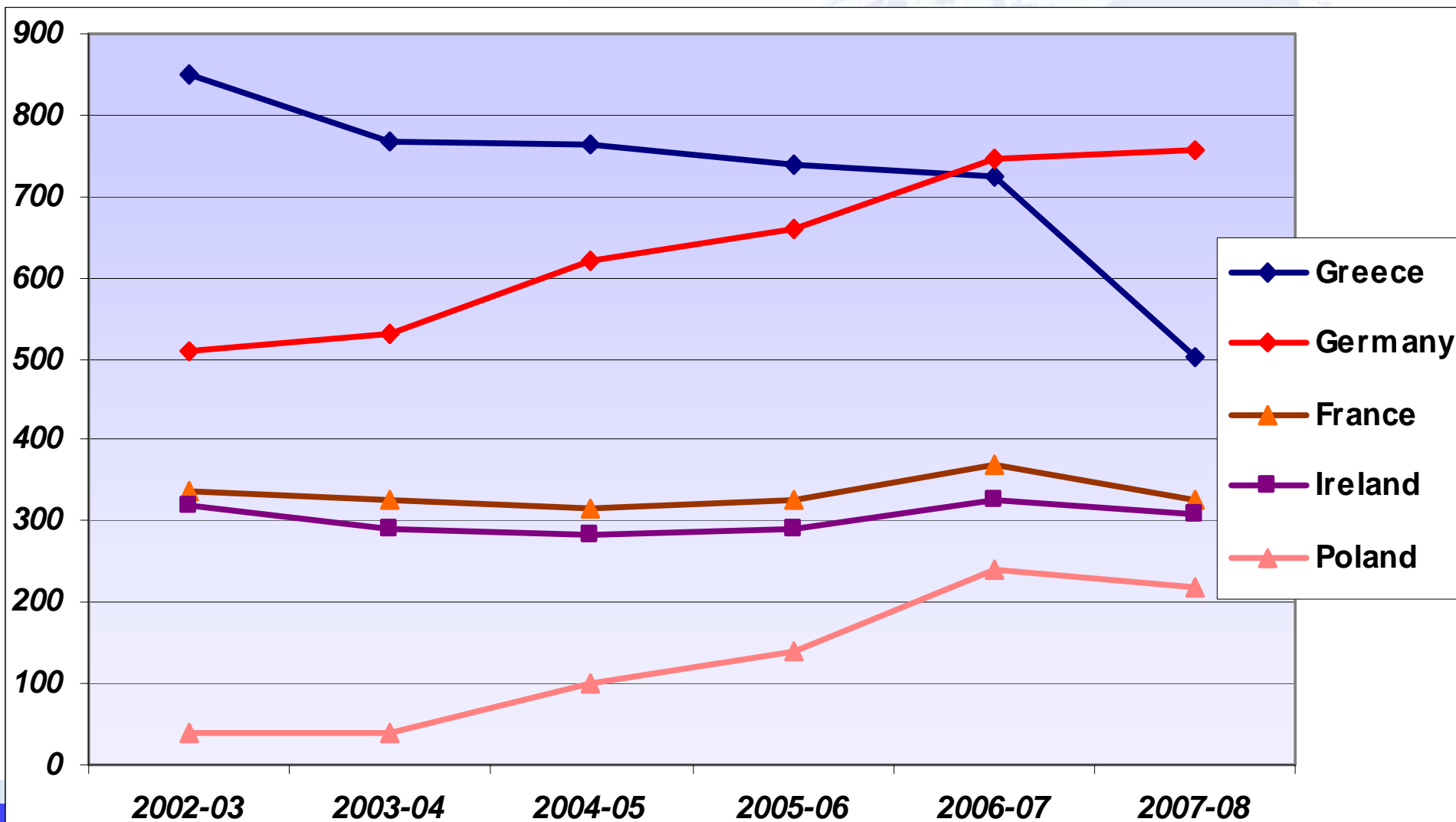




## ***Are EU students important to UK?***

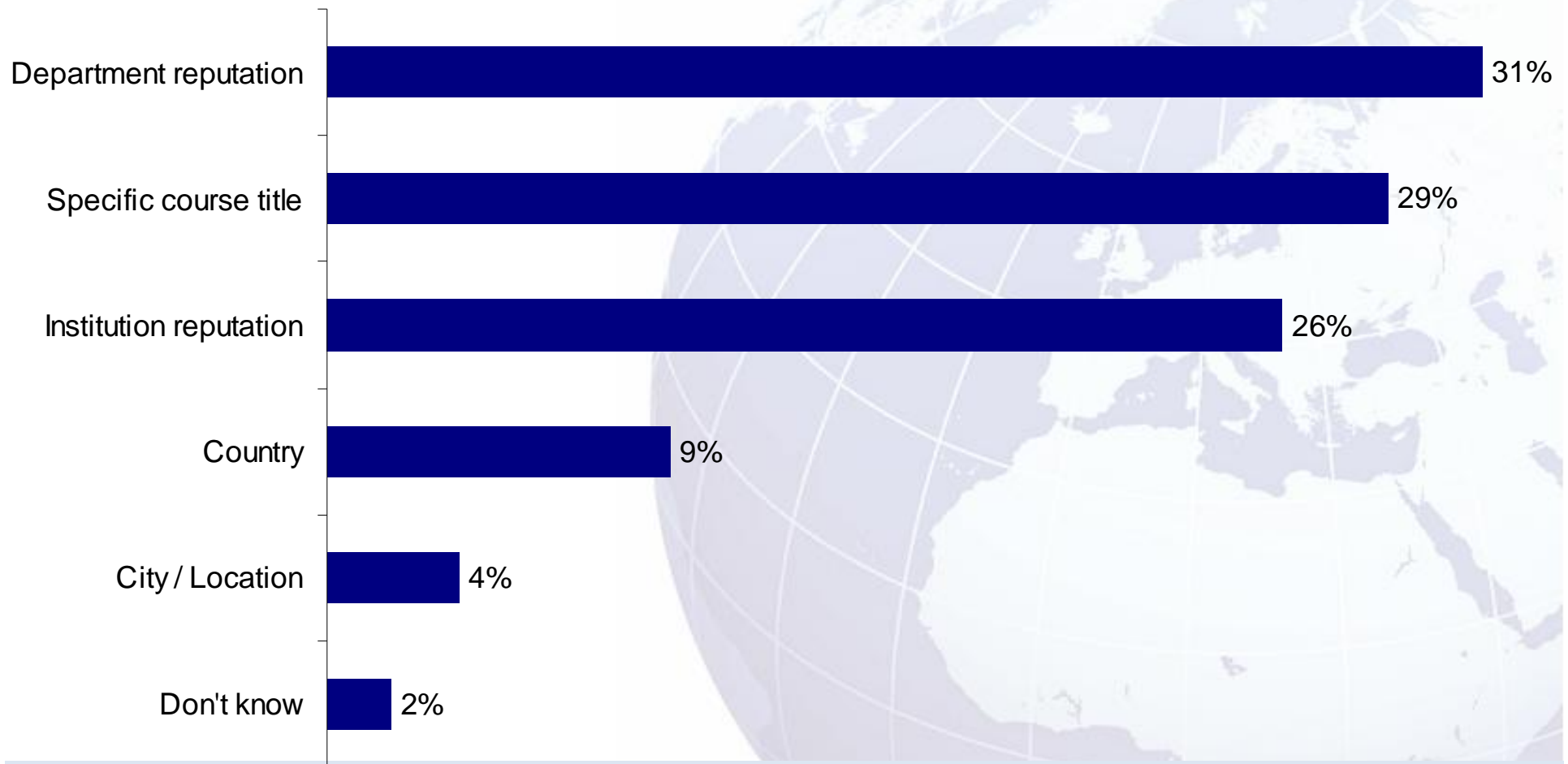
- ***30% of all international PGR students (16,600)***
  - ***14% all PGR students***
  - ***Larger proportions in:***
    - ***Law***
    - ***Social studies***
    - ***Maths***
    - ***Phys sciences***
- 

## **New international student enrolments: trends according to EU countries**

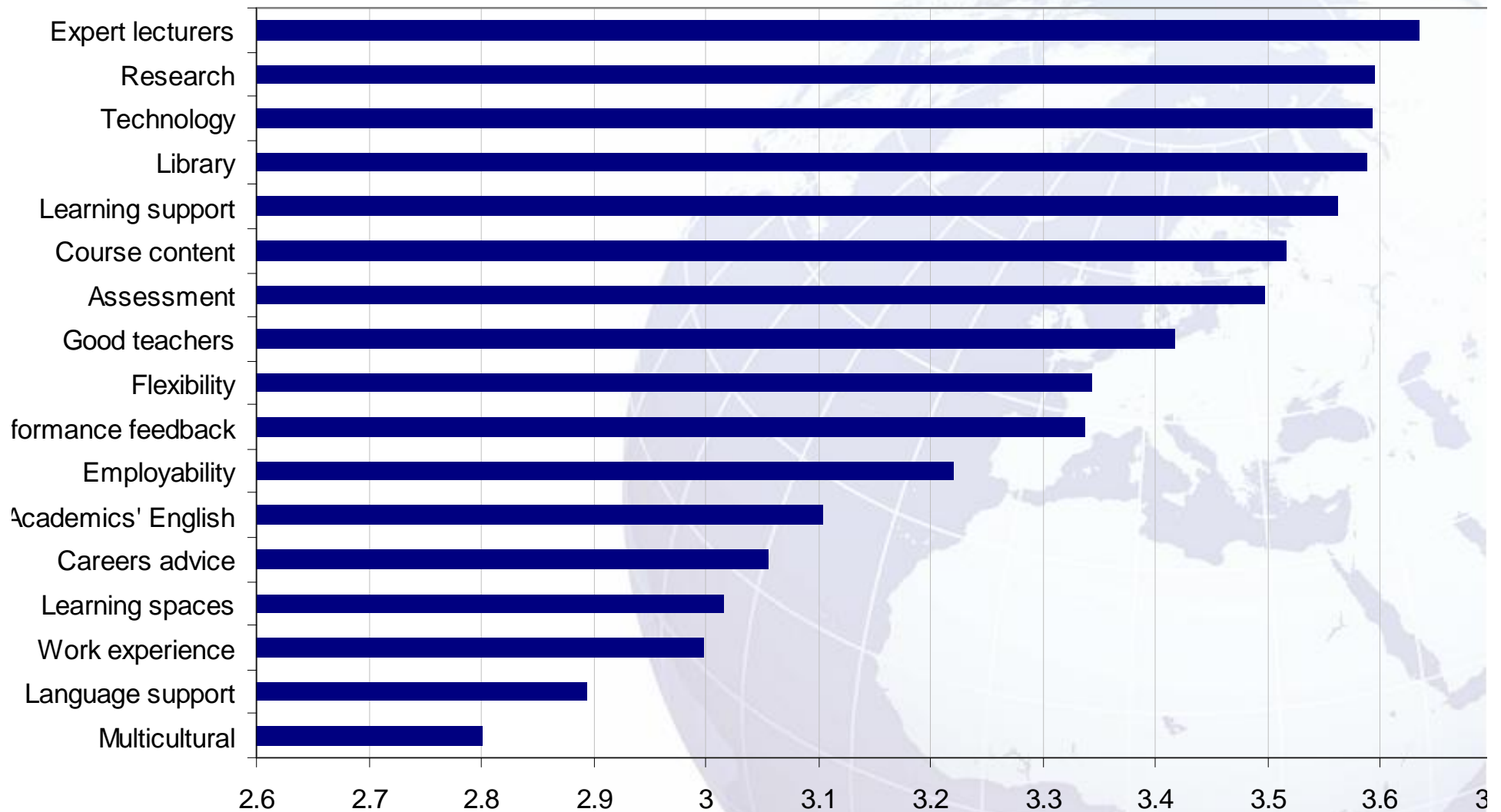


# *turning to the students!*

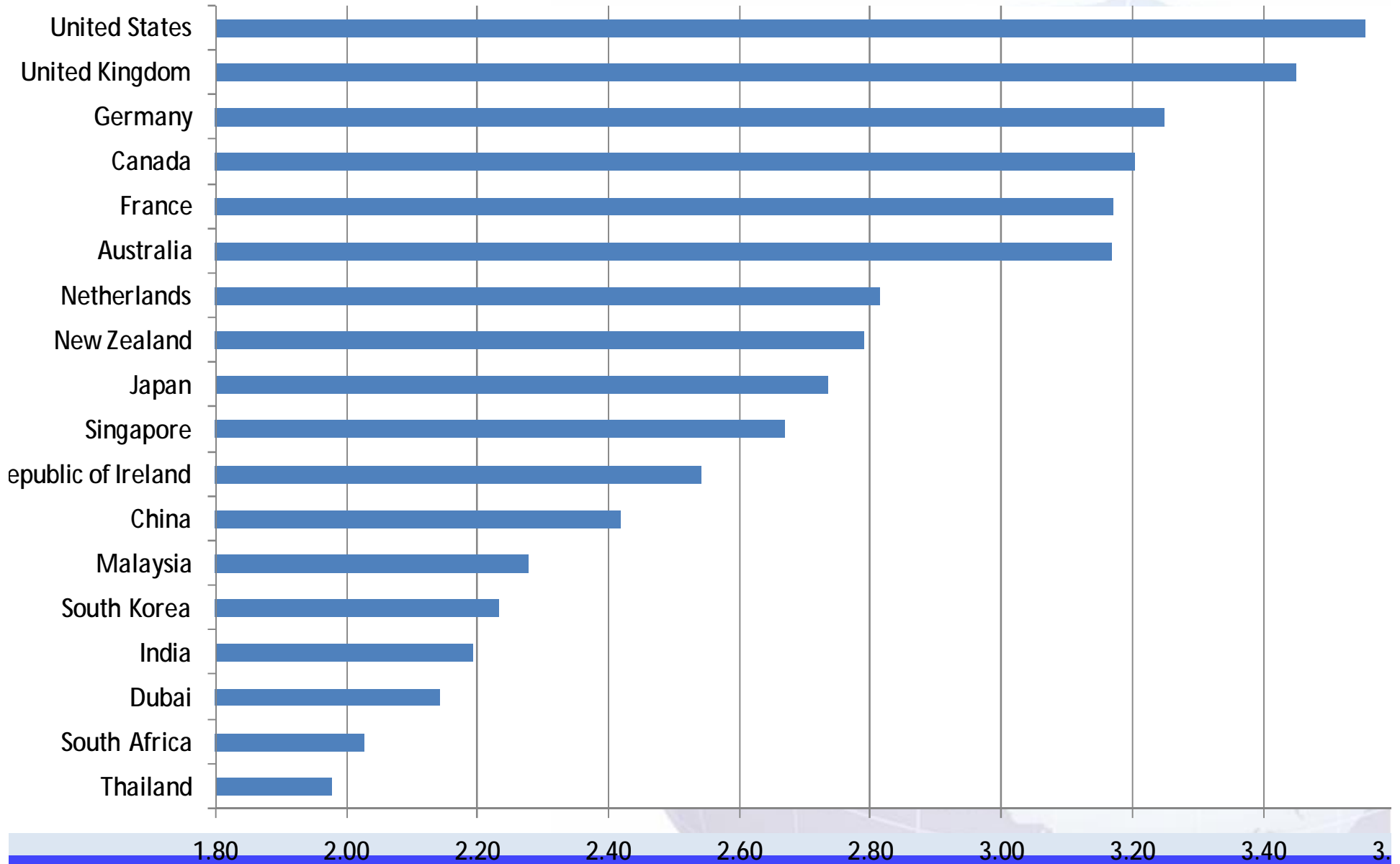
## *Major factors influencing the decision of an international PGR student to study in UK*



## *Relative importance ratings for key factors associated with learning experience.*



# *Relative attractiveness of country destinations favoured by international PGR students*





## ***Some additional considerations regarding research students***

- ***52% UK students enrolled part time***
- ***35% of international students enrolled part time***
- ***40% of EU students enrolled part time***
- ***(Possibly) 50% of international PGR students were studying in the UK >6 months immediately before commencing research programmes***

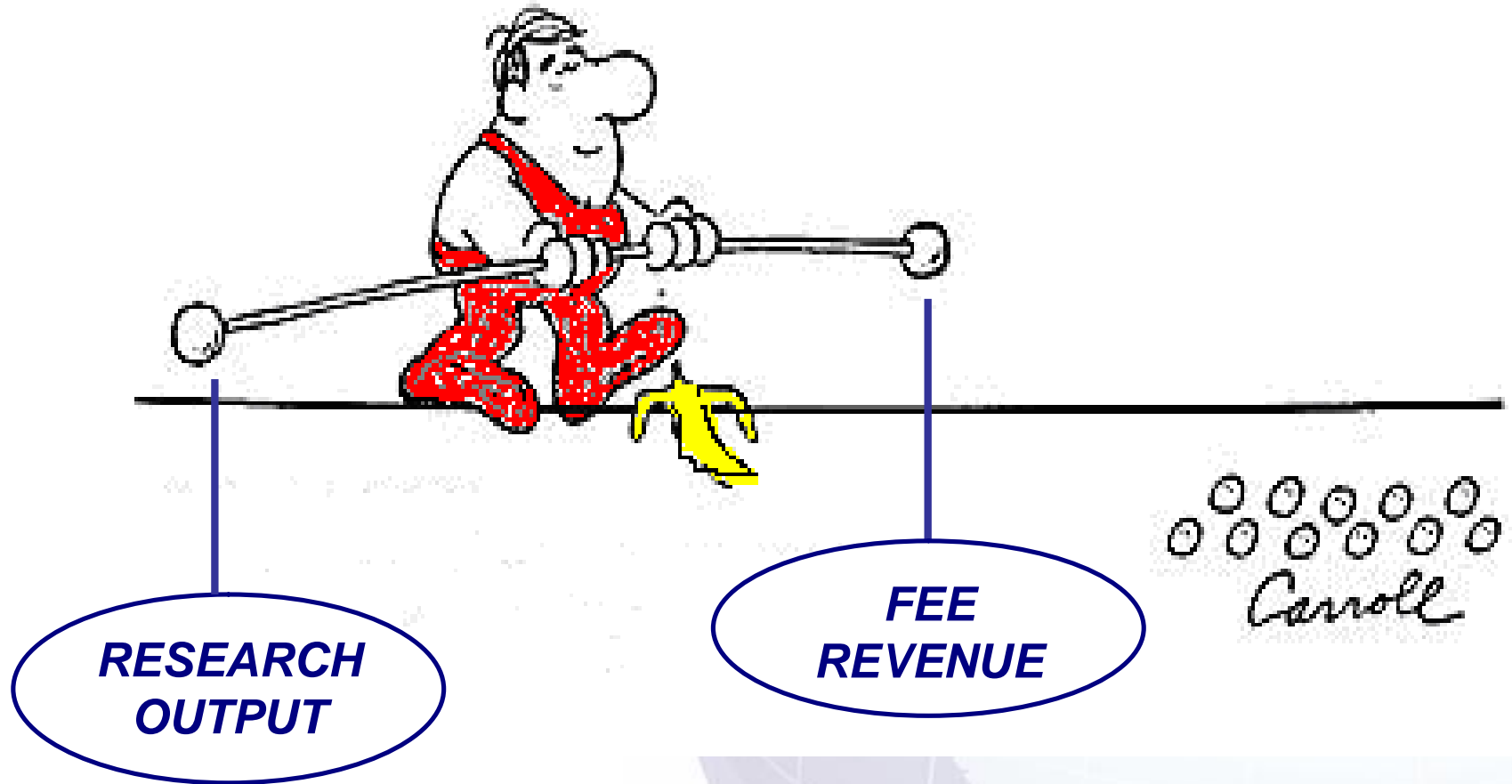
## **Universities with most international PGR students**

<b><i>HE institution</i></b>		<b><i>% of total in UK</i></b>
<b><i>University of Cambridge</i></b>	<b>3230</b>	<b>6.9</b>
<b><i>University of Oxford</i></b>	<b>2650</b>	<b>5.7</b>
<b><i>University of Manchester</i></b>	<b>1880</b>	<b>4.0</b>
<b><i>University of Nottingham</i></b>	<b>1665</b>	<b>3.6</b>
<b><i>University of Birmingham</i></b>	<b>1360</b>	<b>2.9</b>
<b><i>University of Edinburgh</i></b>	<b>1210</b>	<b>2.6</b>
<b><i>University of Newcastle</i></b>	<b>1140</b>	<b>2.4</b>
<b><i>University of Sheffield</i></b>	<b>1125</b>	<b>2.4</b>
<b><i>University College London</i></b>	<b>1040</b>	<b>2.2</b>
<b><i>Imperial College</i></b>	<b>1030</b>	<b>2.2</b>
<b><i>University of Leeds</i></b>	<b>1025</b>	<b>2.2</b>
<b><i>University of Bristol</i></b>	<b>1010</b>	<b>2.2</b>

***Turning to finance .....***



# *The Dean of Graduate School's Dilemma .....* *..... international research students ...*



# ***International PGR students in UK - Who pays?***

## **Non-UK sources**

- ***Students own personal funds:*** 48%
- ***Student scholarship from home:*** 15%
- ***International scholarships*** 0.5%

## **UK sources**

- ***Fee discounts from UK institutions:*** 26.5%
- ***UK scholarships and foundations*** 3.5%

## **Augmented by part time employment**

***Latter is extremely important and its necessity is not generally accepted!***

***(HIGHEST) %age of research students supported by their home government or employer***

<b>Average % home government and/or employer contribution for all countries:</b> <b>15.1%</b>	
<b>Highest %age support:</b>	
<b>Saudi Arabia</b>	<b>69.8</b>
<b>Libya</b>	<b>66.3</b>
<b>Mexico</b>	<b>60.1</b>
<b>Oman</b>	<b>57.4</b>
<b>Thailand</b>	<b>51.0</b>
<b>Malaysia</b>	<b>50.6</b>
<b>Egypt</b>	<b>50.5</b>
<b>Kuwait</b>	<b>47.3</b>
<b>Syria</b>	<b>45.1</b>
<b>Jordan</b>	<b>39.5</b>

## **(LOWEST) %age of research students in UK HE from a country supported by their home government or employer**

<b>Lowest %age</b>	<b>Average 15.1</b>
<b>India</b>	<b>5.6</b>
<b>France</b>	<b>5.4</b>
<b>Taiwan</b>	<b>5.4</b>
<b>Canada</b>	<b>4.8</b>
<b>Australia</b>	<b>4.8</b>
<b>Italy</b>	<b>4.6</b>
<b>Germany</b>	<b>4.5</b>
<b>Israel</b>	<b>3.8</b>
<b>Japan</b>	<b>3.6</b>
<b>South Korea</b>	<b>3.5</b>
<b>China</b>	<b>3.5</b>
<b>Greece</b>	<b>3.4</b>
<b>Hong Kong</b>	<b>3.0</b>
<b>Cyprus</b>	<b>0.7</b>

***Proportion of international students in individual UK HE institution supported by that institution***

<b>Average all UK HEIs</b>		<b>26.6%</b>
<b>Universities providing most support</b>	<b>Nos students</b>	<b>%</b>
<b>University of Oxford</b>	<b>2650</b>	<b>58.2</b>
<b>University of Edinburgh</b>	<b>1209</b>	<b>55.0</b>
<b>University of Sheffield</b>	<b>1124</b>	<b>50.9</b>
<b>University of Nottingham</b>	<b>1665</b>	<b>50.2</b>
<b>Loughborough</b>	<b>744</b>	<b>48.8</b>
<b>Imperial College</b>	<b>1029</b>	<b>44.3</b>
<b>University of Reading</b>	<b>507</b>	<b>43.8</b>
<b>Universities providing &lt; 10% funding</b>	<b>? ? ? ? ? ? ?</b>	



## ***What is driving global demand?***

- ***Fast growth HE provision in lower and middle income countries with lack of research infrastructure for staff development***
  - ***Increasing investment in research eg China***
  - ***Increasingly competitive international employment market***
  - ***Access international employment***
- 
- 

***The global competition***



# USA

- *±120,000 international PGR students*
- *Overall ±45% international*
- *±65% international students of all in eng and tech*
- *After 9/11 declines international student recruitment again growing fast*
- *Fees: STEM rarely required*
- *Teaching and research assistantships available for living costs*
- *75% of international PGR students intend to stay in US to work*

***US proportionately underachieves! Is the sleeping giant waking?***

About Us

Academics

Admissions

Financial Support

+/-

» Ph.D. Support

Departmental  
Fellowships &  
Assistantships

Competitive  
Fellowships for  
Incoming Students

Competitive  
Fellowships for  
Continuing Students

International Travel

Other Support

Master's Support

Cost of Attendance

Loans & Work Study

Payment of Awards

Forms

Policies

## FINANCIAL SUPPORT

### PHD SUPPORT

It is the expectation of the Graduate School that Ph.D. students will be financially supported, through a combination of departmental and extra-departmental funds, for the majority of the time they are registered and working toward their degree. Generally speaking, Ph.D. students should receive payment of tuition, either in the form of a departmental scholarship or an external fellowship that covers some portion of the cost of education, and stipend and fee support for a minimum of five years.

Graduate students are supported in a variety of ways. Some will receive fellowships from their departments; others will receive competitive fellowships from the Graduate School or other governmental or private sources. In many of the basic medical science programs, students are appointed to training grant fellowships for their first two years of study. Other students are supported through teaching or research assistantships, funded through a department's instructional budget, or a faculty member's research funds.

While financial commitments are made to students for a set number of years, it is important to understand that the overall graduate awards budget is dependent on a significant number of students obtaining external fellowships. We expect all students to make a good faith effort to obtain such external support at some point during their funding period and students should be encouraged to pursue these opportunities.



### HELPFUL LINKS

- The Graduate School [FAFSA](#) code is **E00165**.
- [Duke Office of Research Support](#)
- [National Student Loan Data System](#)
- [The Smart Student Guide](#)
- [Lifetime Learning Tax Credit and Hope Scholarship](#)
- [Recommended Stafford, Graduate PLUS loan lender list](#)
- [Student Account Bursar Bills](#)

## ***UK – US cooperation HE project***

- ***Funded through PMI2, managed by British Council***
- ***Consultancy team reviewing***
- ***Research cooperation part of this***
- ***On-line questionnaires***
- ***Seminar later in year***
- ***Your assistance very much welcome!***

***(research questionnaire:***

***<http://survey.euro.confirmit.com/wix3/p248361089.aspx>***

***or***

***[neil.kemp@nkeducation.com](mailto:neil.kemp@nkeducation.com)***

## ***Australia***

- ***±10,000 international PGR students***
- ***International PGR ±20% of total PGR***
- ***Approach to funding similar to UK***
- ***Fees ± £12K pa***
- ***Scholarships: high number of fee remissions and full scholarships***
- ***Now prioritise PGR – and seen good growth***

[Site home](#)

## Site menu

- [Future Students](#)
- [Current Students](#)
- [For University Staff](#)
- [Opportunities, Programs & Services](#)
- [About Us](#)
- [Publications & Writing Support](#)
- [The Writing Centre for Scholars and Researchers](#)

## Melbourne/Malaysia 'Split' PhD Partnership

### The PhD and research collaboration initiative

The Malaysian Ministry of Higher Education recently negotiated a Partnership Agreement between seven Malaysian Universities and The University of Melbourne. This Agreement is similar to agreements which the Malaysian Ministry of Higher Education has in place with Nottingham University and with Imperial College, London. The University of Melbourne is the only Australian university invited to participate in this initiative.

The primary objectives of the Agreement are:

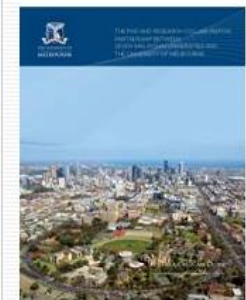
- to build capacity in the Malaysian higher education sector by providing joint PhD research training at The University of Melbourne and the designated Malaysian Universities to selected candidates from the participating Malaysian Universities; and
- to foster collaborative research and exchange between academic staff of the participating Malaysian universities and The University of Melbourne.

To achieve these objectives, scholarships will be provided by the Malaysian universities to selected academic staff of their respective universities to undertake PhD training at The University of Melbourne. The PhD training will be based on a four (4) year full-time course of study whereby the selected candidates split their research time between The University of Melbourne and their respective Malaysian university. Full scholarships will be provided to commencing PhD students for the next four years commencing in 2007/8 through to 2010/2011. This means that in effect the Agreement continues for a period of eight years.

Important features of the Agreement are as follows:

- The PhD qualification will be an award of The University of Melbourne.
- The period of residence at The University of Melbourne will normally be a minimum of 50% of the four year full-time course of study (ie a minimum of 2 years) and this period will include the first three months and the last three months of the PhD program. Students may, however, spend more than two years at Melbourne if this is required for the particular project. The remainder of the candidature will be undertaken at the respective Malaysian university. The time period at each location will be negotiated on a case by case basis between the supervisors, candidate and the respective universities. Please note that some Malaysian universities may limit the amount of consecutive time in Australia to 12 months for any single visit.
- Each selected PhD candidate will normally be supervised by an approved supervisor from The University of Melbourne and an approved supervisor from one of the participating Malaysian universities, although there is provision in the Agreement for the co-supervisor to be sourced from any Malaysian university.

tion and applicable service fees over the 4 year full-time PhD program, including agreed skills



Download a copy of [The PhD and Research Collaboration Partnership between Seven Malaysian Universities and The University Of Melbourne](#) flyer.



## ***France***

- ***± 24,000 international doctoral students***
- ***35.2% of total doctoral students***
- ***No fees***
- ***Good availability of living costs' scholarships – government funded***
- ***Opportunities to remain in France***

## ***International doctoral students in French HE***

<b><i>Total Nos of International Doctoral Students</i></b>	
<b><i>EU</i></b>	<b><i>3569</i></b>
<b><i>Non-EU Europe</i></b>	<b><i>1875</i></b>
<b><i>Africa</i></b>	<b><i>10407</i></b>
<b><i>America</i></b>	<b><i>2248</i></b>
<b><i>Asia</i></b>	<b><i>5844</i></b>
<b><i>Oceania</i></b>	<b><i>24</i></b>
<b><i>Totals</i></b>	<b><i>23975</i></b>

<b><i>International students as a proportion all doctoral students by subject</i></b>	
<b><i>Humanities</i></b>	<b><i>36.2</i></b>
<b><i>Social Sciences</i></b>	<b><i>56.8</i></b>
<b><i>Science and Eng</i></b>	<b><i>31.3</i></b>
<b><i>General</i></b>	<b><i>35.7</i></b>
<b><i>Medical related</i></b>	<b><i>22.9</i></b>

## OUR PROGRAMMES

[Master of Philosophy \(MPhil\)](#)[Doctor of Philosophy \(PhD\)](#)[Doctorate of Business Administration \(DBA\) in China](#)

## Research

## Doctor of Philosophy (PhD)

[PhD Application Form](#)[PhD brochure](#)

The objective of the PhD Programme is to educate participants to the level of professional researcher capable of producing new knowledge in the field of management in academia, consulting or corporate environments. This is accomplished through the process of learning how to and then completing an original piece of research of sufficient quality to be publishable in academic journals.

[Structure of the Programme](#)  
[Profile of Participants](#)  
[Accreditation](#)[Admission Requirements](#)  
[General conditions](#)

## STRUCTURE OF THE PROGRAMME

[Read more](#)

## PROFILE OF PARTICIPANTS

[Read more](#)

## ACCREDITATION

[Read more](#)

## Contacts

• **Nolwenn PRIE**  
International coordinator  
[Contact](#)  
Tel : +33 (0)2 99 54 63 37

• **Shu BOURGEON**  
International coordinator - Asia  
(except India)  
[Contact](#)  
Tel : +33 (0)2 99 54 63 55

#### OUR PROGRAMMES

[Master of Philosophy \(MPhil\)](#)[Doctor of Philosophy \(PhD\)](#)[Doctorate of Business Administration \(DBA\) in China](#)

## Research

### Doctorate of Business Administration (DBA) in China

The DBA programme is a doctorate programme for executives who have top management experience in the business world. The ESC Rennes DBA programme is designed to help high level executives to synthetically improve their managerial, economic, financial theories, as well as their abilities in dealing with problems in the strategic decision-making process.

The DBA degree differs from the traditional PhD by virtue of being more pragmatically oriented. It emphasizes the integration of management theory and practice. The programme aims to enhance the candidate's knowledge base, sharpen their critical abilities and prepares them to solve challenging management problems.

[Courses in Shanghai and Rennes](#)[Admission Requirements](#)

#### COURSES IN SHANGHAI AND RENNES

Courses given by ESC Rennes School of Business :

- Research Methods for Management
- International Business Law
- Strategic Marketing
- Management of Information System
- Dissertation Writing Methodology

Courses given by Shanghai Jiaotong University:

- Multinational Corporation Finance
- Advanced Economics Theory
- Global Financial Markets
- Organization Behavior

#### ADMISSION REQUIREMENTS

#### Contacts

- **Shu BOURGEON**  
International coordinator - Asia  
(except India)  
[Contact](#)  
Tel : +33 (0)2 99 54 63 55

# ***Germany***

- ***±25,000 international doctoral students***
- ***No fees***
- ***Research students are given monthly living costs stipend (± €1,000 pm)***
- ***Recruit through targeted overseas visits***

## ***Doctoral researchers in German universities: proportions by subject areas***

<b><i>Subject Area</i></b>	<b><i>% of Total</i></b>
<b><i>Humanities and Languages</i></b>	<b><i>22.5</i></b>
<b><i>Social Sciences and Law</i></b>	<b><i>13.1</i></b>
<b><i>Physical. Mathematical and Biosciences</i></b>	<b><i>37.3</i></b>
<b><i>Medicine and related</i></b>	<b><i>4.7</i></b>
<b><i>Agriculture and related</i></b>	<b><i>4.9</i></b>
<b><i>Engineering</i></b>	<b><i>14.9</i></b>
<b><i>Others</i></b>	<b><i>2.6</i></b>

## ***International students (all levels) in German HE according to country of origin (DAAD)***



<b><i>Source country</i></b>	<b><i>Total</i></b>
<b><i>China</i></b>	<b><i>25,987</i></b>
<b><i>Poland</i></b>	<b><i>12,209</i></b>
<b><i>Bulgaria</i></b>	<b><i>12,467</i></b>
<b><i>Russia</i></b>	<b><i>9,594</i></b>
<b><i>Morocco</i></b>	<b><i>6,986</i></b>
<b><i>Turkey</i></b>	<b><i>6,587</i></b>
<b><i>Ukraine</i></b>	<b><i>6,532</i></b>
<b><i>France</i></b>	<b><i>5,512</i></b>
<b><i>Cameroon</i></b>	<b><i>5,245</i></b>
<b><i>Austria</i></b>	<b><i>4,148</i></b>



## Study and research in Germany

Home ↶

You've got questions about studying in Germany?

Ask Dany, your virtual advisor.



Home « Study and research in Germany « Research « Doctorate « Paths to a Doctorate

## Paths to a Doctorate in Germany

## Why do a doctorate?

Around 120 universities in Germany offer opportunities for graduates to follow up their academic studies with a doctorate. Each year sees around 25,000 postgraduates gain a doctorate in Germany. They all believe that the effort of crowning their studies with a doctoral cap is certainly worth their while.

Statistics and labour market forecasts prove them right. The demand for highly-qualified, internationally-trained young academics and scientists is growing all the time. And not only in Germany, but all around the world as well.

No matter whether Dr. or PhD – those who complete their doctorate quickly and with an above-average grade and who have, at the same time, learnt how to move on the international stage can look forward to outstanding career opportunities at universities, research institutes and in industry – and not only in Germany.

- [The "Master-Apprentice Model": the classical route to a doctorate](#)
- [What requirements do I need to meet to be able to take up a course of doctoral studies?](#)
- [How do I apply for a course of doctoral studies?](#)
- [What language skills must I have?](#)
- [How is a structured doctoral programme different from a master-apprentice doctorate?](#)
- [What structured doctoral programmes exist?](#)

## The "Master-Apprentice Model": the classical route to a doctorate

Germany does not traditionally have a system of Graduate Schools, Graduate Centres or Graduate Colleges that support and guide students to their doctorate in a structured programme; nor is there a binding curriculum that needs to be completed during the doctoral phase. The production of a doctoral thesis or dissertation is the core element of the doctorate. Students agree their topic with a supervising professor and then produce a thesis or dissertation as a piece of independent research work. Since there is no curriculum, there is also no set length for doctoral studies and no obligation to attend courses. The very liberal, traditional system has its advantages and disadvantages. However, it is always important that the doctoral student is very independent and personally motivated and that a good and trustful relationship exists with the academic supervisor.

## What requirements do I need to meet to be able to take up a course of doctoral studies?

As a rule, a requirement for acceptance as a doctoral student is an outstanding degree in the corresponding subject area. This degree must have been gained in a university programme after at least eight semesters of study (4 years). However, more and more doctoral degree regulations now also provide opportunities for the admission of particularly



Photo: Internationale Universität Bremen



DAAD worldwide

Select a continent...

show ►►

DAAD-magazin.de

Soziales Jahr im Ausland  
**"Kulturweit" für Freiwillige**  
Auswärtiges Amt startet neuen  
Freiwilligendienst "Kulturweit".  
Der DAAD ist mit seinen  
Außenstellen und...

Vietnamesisch-deutsche  
Universität**Vorbild Deutschland**

In Ho Chi Minh-Stadt entsteht  
mit der Vietnamesisch-  
Deutschen Universität die erste  
staatliche Hochschule des  
Landes unter...

# ***Netherlands***

- ***Numbers not known***
  - ***All are formally staff and recruited against a funded post***
  - ***New directions***
    - ***Research student places being created – but full scholarships funding***
    - ***International partnerships with governments***
  - ***Major potential for growth***
  - ***Watch this space!***
- 



## Graduate Schools

- > Introduction
- > Overview of Graduate Schools
- > Organization of degree levels
- > Graduate School Master's degree programmes
- > PhD programmes

## PhD programmes

In the four year PhD programmes, students conduct their own research while the respective Graduate School provides a balanced mix of expert supervision, tailor-made postgraduate training and the freedom to pursue your own ideas within relevant research themes. In some cases part of the research is carried out abroad and many international PhD candidates are welcomed for short stays as well. The results are written down in a PhD thesis, often including papers published in scientific journals. After a successful defence, you will be awarded with an internationally highly esteemed PhD degree. In addition to 4-year full-time programmes, variants are possible: e.g. combining a PhD with work outside the university environment.

### Obtaining a PhD position

Admission for PhD candidates is highly selective and based on academic merit: your best preparation is successful completion of one of our Graduate School Master's. However, chances are that you are currently looking for a PhD position and funding. The best ways to look for a PhD position are:

1. Check our [website for job opportunities](#). A number of PhD positions are usually posted there. Please be aware that these positions are usually within a set research theme or are part of a larger research project. You need to officially apply to obtain one of these positions.
2. Look for positions offered by Research Institutes on their respective websites.
3. Contact the PhD co-ordinator of the Research Institute or Graduate School covering your field of interest. When your own ideas for a PhD project do not match the positions that are currently offered, the co-ordinator can inform you about the possibilities for accommodating your proposal.

### Funding

When you apply for an available position, funding will be arranged for you. Details are included in the description of the available position.

The University of Groningen is also committed to recognizing excellence in academic achievement through [scholarships](#) for PhD candidates. In some cases these are reserved for candidates from our partner universities within set research projects, however, some are open for all applications. It is best to apply in agreement with the PhD co-ordinator of the Research Institute or Graduate School covering your field of interest.

Last modified: July 25, 2008 09:36

English | [Nederlands](#)

### More information

> [Grantfinder](#)

### Apply online

> [Apply online](#)

Receiving a PhD degree

### Hoogleraren/ Professors

> [Professors at the University](#)

### Higher Education in the Netherlands

- > Educational system
- > Teaching style
- > Code of conduct international students



## **Scandinavia**

- ***Denmark***
- ***Sweden***
- ***Norway***

## **Other countries**

- ***New Zealand***
- ***Canada***
- ***China***



Search

Home

Why Sweden?

Study options

Universities

Find courses

Scholarships

Living in Sweden

Learn Swedish

Tell a friend

## Study options

Choose the education that is right for you.

→ Basic information

→ Undergraduate studies

→ Master's studies

↓ Doctoral studies

→ The Swedish PhD

→ Admission requirements

→ How to apply

→ Research Links

→ Fields of study

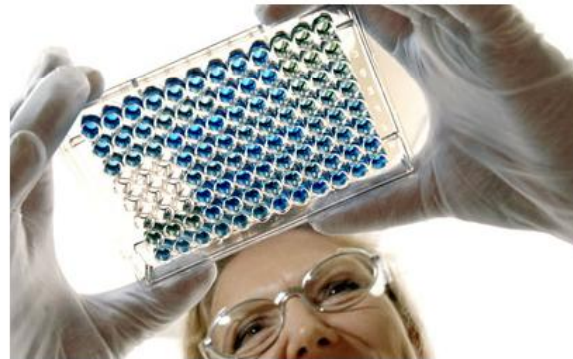
→ Contract training

→ Advanced Vocational Education (AVE)

→ Traineeships

## Doctoral studies

Swedish research is wide-ranging and well respected internationally. Swedish researchers are especially prominent in the fields of natural science, medicine and technology.



Most publicly funded research is carried out at universities. Many teachers are involved in both education and research, while also supervising PhD students.

Foreign students enrolled as PhD students at their home universities can register for postgraduate courses and seminars in Sweden for a limited period, provided there is an exchange agreement or some other link between the Swedish institution and its foreign counterpart.

Otherwise, admission to doctoral studies is restricted and universities and university colleges may only admit students who have funding for the

### Internal quicklinks

- Meet students and faculty
- SI scholarships
- Erasmus Mundus

### External quicklinks

- Sweden.se
- Embassies & consulates
- Visit Sweden
- SwedenInTouch.se



- Study in Norway
- Where can I study?
- What can I study?
  - Undergraduate studies
  - Masters programmes
  - PhD programmes**
  - Research
  - Summer programmes
  - Petroleum Studies
  - Marine Studies
- Masters course search
- Education system
- Tuition/Scholarships
- Norwegian language
- Living in Norway
- FAQ
- Publications
- Minifacts about Norway

# NORWAY. A UNIQUE STUDENT EXPERIENCE.



[Study in Norway / What can I study? / PhD programmes](#)

[Sitemap](#)



## PHD PROGRAMMES

**The Doctoral Degree (Ph.D.) is awarded after three years of study following completion of a Masters degree or a professional degree programme. Doctoral programmes, which are essentially research programmes, are offered by all university-level institutions, some state university colleges and a few private institutions.**

The degree is made up of a training component equivalent to no less than 30 "studiepoeng"/ECTS (1 semester of full-time study) and a dissertation. The dissertation is an independent piece of scientific work that meets international standards within its subject area. If the dissertation is approved, it has to be defended at a public disputation.

The formal entrance qualification for the Ph.D. study is a Master-degree (2 years research master), or a corresponding degree from professional training schools (e.g. psychology, dentistry, medicine, law), or equivalent qualifications.

A number of Ph.D. programmes are designed as a four-year programme where 25 per cent of the time is reserved for teaching at lower level courses.

Some institutions offer two types of doctoral degrees: The "organised" doctoral degree is called Ph.D. (philosophiae doctor). This degree includes obligatory formal training and supervision in addition to the dissertation which is the main focus of the Ph.D.

The second type is a "free" doctoral degree which is called Dr. philos. (doctor philosophiae). No formal training or supervision is included in this degree, and this is typically not part of the institutions' formal Ph.D. programme or Research schools. The scientific status of the two degrees is the same.

More and more Ph.D. programmes in English are being offered at Norwegian institutions. You should contact each [institution](#) individually for more information.

### Centres for Research-based Innovation (CRIs)

Long-term research based on forging close alliances between research-intensive enterprises and prominent research groups.

[Read more](#)

### Norwegian Centres of Excellence

Norwegian research environments devoted to long-term, basic research.

[Read more](#)

Last modified: 28/08/2008 2:47 pm

How to do your PhD studies  
at a Danish university

## PHD AND RESEARCH

### Teke Ngomba's PhD experience

What struck and impressed me  
most was the friendly and almost  
total formal relationship and  
interaction between students and  
professors

THIS ISSUE'S THEME

## PhD Scholarship with Residual Research

3R • RESIDUAL RESOURCES RESEARCH OFFERS CO-FINANCING OF SCHOLARSHIP FOR  
SPECIFIC STUDIES AS WELL AS PHD COURSES, SUMMER SCHOOLS AND SEMINARS. THE  
SCHOOL OFFERS MEMBERSHIPS ALSO TO PHD STUDENTS REGISTERED AT OTHER  
UNIVERSITIES.

## PHD POSITIONS

### Promovieren ■ Dänemark

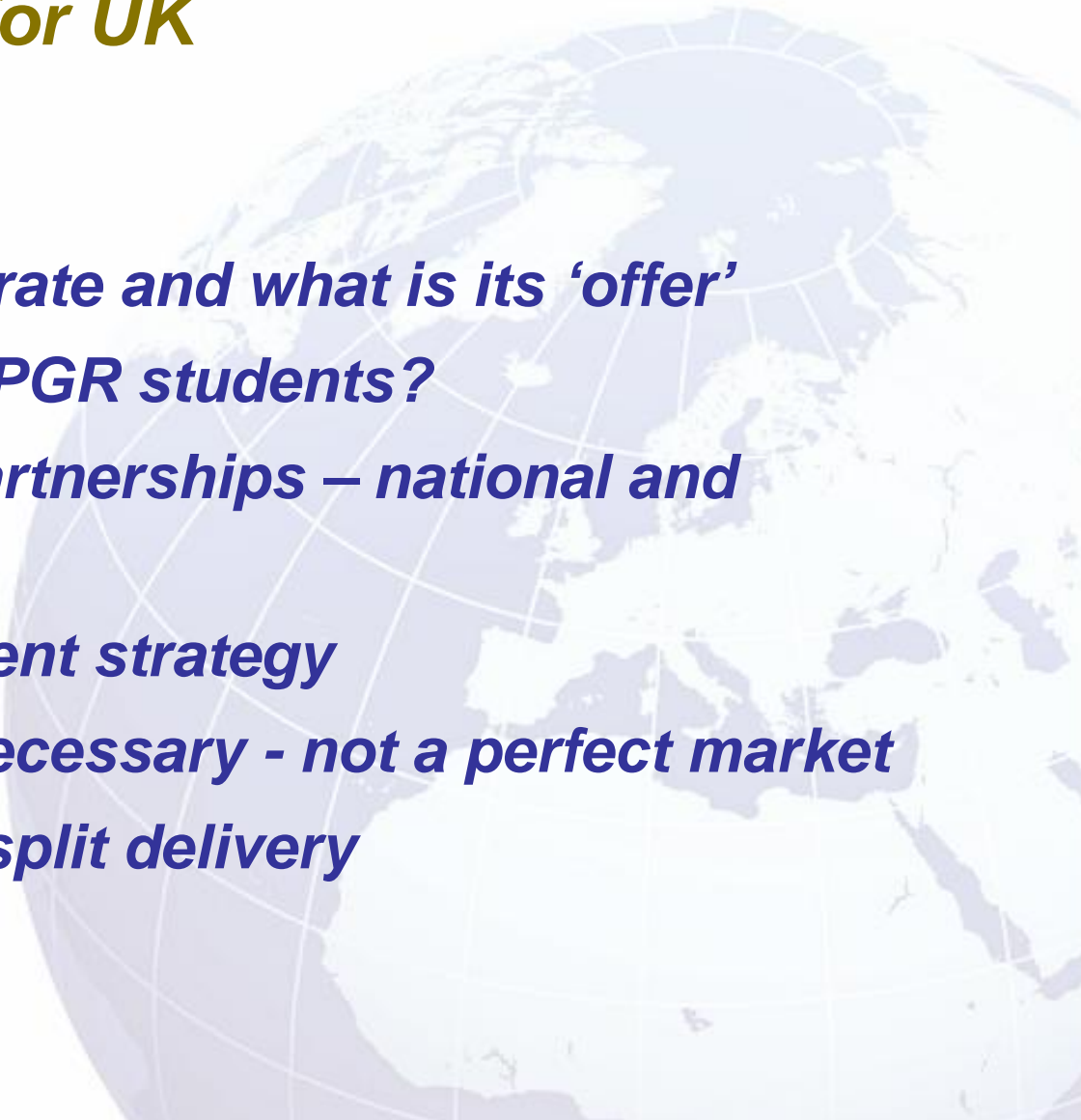
Come and learn about your  
opportunities for doing a PhD  
Meet representatives of  
Danish universities and graduate  
colleges Talk to German  
students presently engaged  
doctoral studies



## ***Some findings at UK national and institutional levels:***

- ***No clear statement of the UK doctorate, what it means, pathways and supervisor support***
  - ***Research doctorate***
  - ***Professional doctorate***
- ***No clear advice on how to access appropriate research programmes/departments/supervisors***
- ***No clear information on scholarships and funding***
- ***No clear advice on immigration and access to employment***
- ***Institutional and national websites not research student friendly***

## ***Possible strategies for UK***

- ***What is the UK doctorate and what is its 'offer'***
  - ***What do we promise PGR students?***
  - ***Grow international partnerships – national and institutional***
  - ***Have a PGR recruitment strategy***
  - ***Central investment necessary - not a perfect market***
  - ***More in-country and split delivery***
- 

## Search Results: 207 adverts

You searched for:

**Job Type(s):** PhD Studentship

**Job Sector(s):** Engineering and Technology

The most recently placed adverts are listed first.

[Email me jobs like these](#)

[Browse jobs by category](#)

[RSS Feeds](#)

Date Added	Job Details	Date Expires
03 Mar 09	<a href="#">Up to 10 PhD Studentships in Clean Fossil Fuels</a> Department of Chemical Engineering, Qatar Carbonates and Carbon Storage Research Centre — Imperial College London	02 May 09
02 Mar 09	<a href="#">Up to 10 PhD Studentships in Clean Fossil Fuels</a> Department of Earth Science and Engineering, Qatar Carbonates and Carbon Storage Research Centre — Imperial College London	02 May 09
02 Mar 09	<a href="#">PhD Positions</a> <b>802.11 Wireless Mesh Networks</b> — Hamilton Institute	02 May 09
02 Mar 09	<a href="#">PhD Studentships (3)</a> <b>Advanced Space Concepts Laboratory</b> — University of Strathclyde	03 Apr 09
27 Feb 09	<a href="#">PhD Positions</a> <b>Theoretical Neuroscience</b> — Max Planck Institute for Human Cognitive and Brain Sciences	31 Mar 09
27 Feb 09	<a href="#">PhD Studentship</a> <b>Micro- and Nanoencapsulation for remote controllable drug release</b> School of Engineering and Materials Science — Queen Mary, University of London	19 Mar 09
26 Feb 09	<a href="#">BRF-funded PhD Studentship</a>	03 Apr 09

## Welcome to Find a PhD

### The World's Largest Database of PhD Opportunities

FindAPhD.com is a comprehensive guide to current research and PhD studentships. Our database contains details of research topics from many major universities and institutions throughout Europe.

Click your Refresh key to see more Featured Departments.



## STUDENTS

Click to search our database of research topics

## FORUM

Ask a question in the PhD Forum



## ADVERTISERS

Looking for new PhD students? Click for details

email updates

Sign up to our weekly "latest projects" email:



### Latest PhD Projects - View More -

Role of WAVE PROTEINS in the Regulation of Directed Cell Migration Ref: PCMD/GS0015

Northumbria University

Reproducibility of label-free quantitative proteomic analyses

University of Surrey

### Featured PhDs

Computer Science  
3-4 Year PhD Program  
Center of Excellence  
Max Planck Research

University of Strathclyde Glasgow  
Full PhD Scholarships in Science & Engineering

NOTTINGHAM TRENT UNIVERSITY  
Graduate School  
Arts, Humanities and Education

Brunei UNIVERSITY WEST LONDON  
PROFESSIONAL DOCTORATE in Public Health  
Marrying Research, Practice & Policy

UNIVERSITY OF ABERDEEN  
Arts & Social Science PhD Scholarships

dynacop  
Research Center Juelich  
PhD studentship in Neutron Scattering in Controlled Rheology

Health Protection Agency  
Fully funded project on rotavirus genetics and evolution

THE UNIVERSITY of York

Fully Funded  
UK/EU  
PhD Studentships

Department  
of Biology

## ***What might you do now in your institution?***

- ***Learn from your current international PGR students***
- ***Review your website and promotion materials***
  - ***Does it explain your PhDs?***
  - ***Does it explain scholarships, fees and other funding arrangements***
  - ***Is there a clear statement of subjects available***
  - ***Is there clear statement of application process (and time scale!)***
- ***Clearly articulated university PGR strategy – with investment***
- ***Invest in some market research***
- ***Advocacy – in institution and nationally***

## ***A few conclusions on the longer term -***

- ***UK has been the most successful country for PGR recruitment***
- ***Underlying decline in international PGR student recruitment to UK***
- ***Competition will increase markedly – but they have yet to get their act together!***
- ***UK approach to funding PGR students is not sustainable***
- ***Need to re-invigorate our approach while we are still in position of strength!***



***Thanks!***

***Dr Neil Kemp***

***[neil.kemp@nkeducation.com](mailto:neil.kemp@nkeducation.com)***

